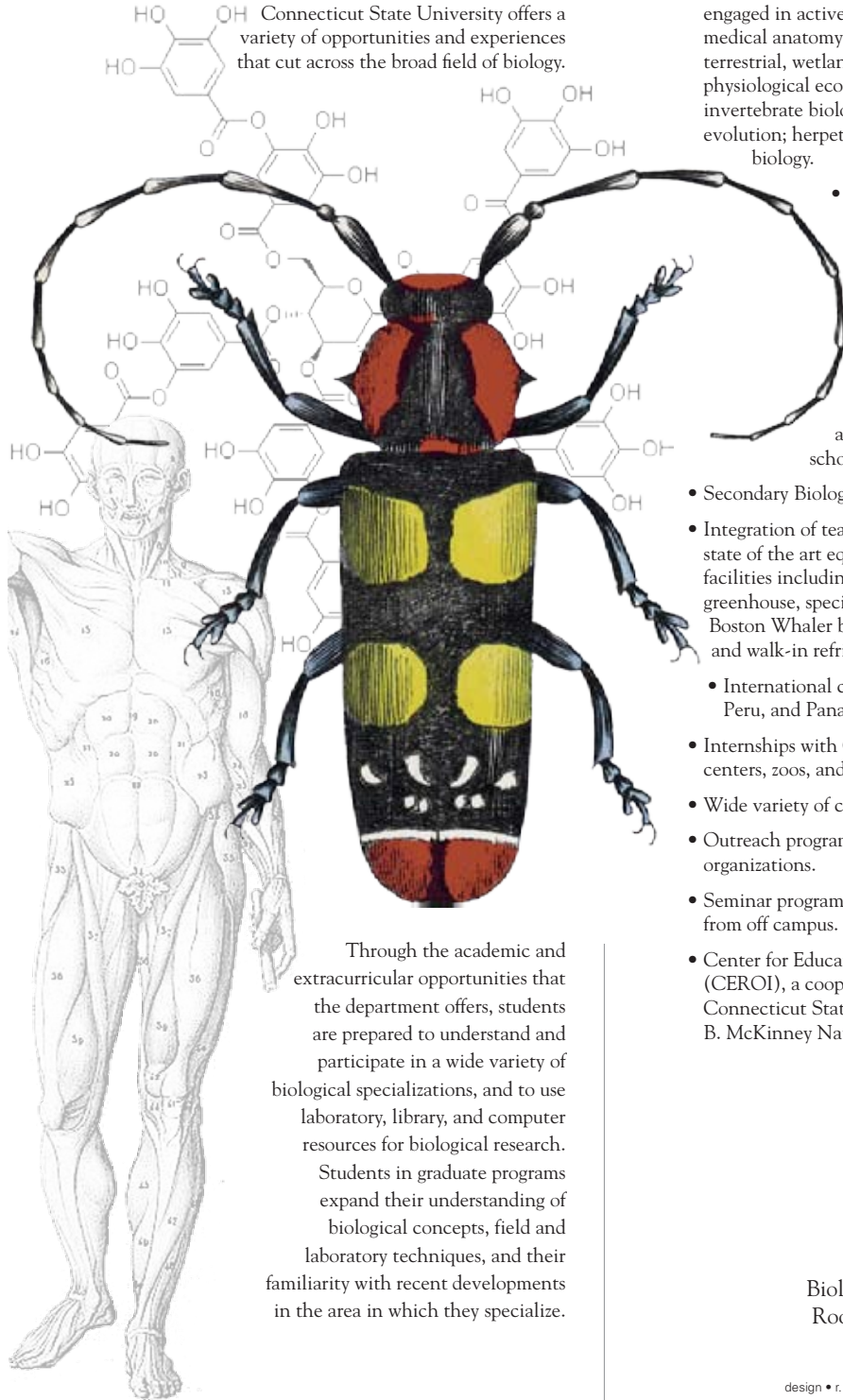


The **Biology Department** at Central Connecticut State University offers a variety of opportunities and experiences that cut across the broad field of biology.

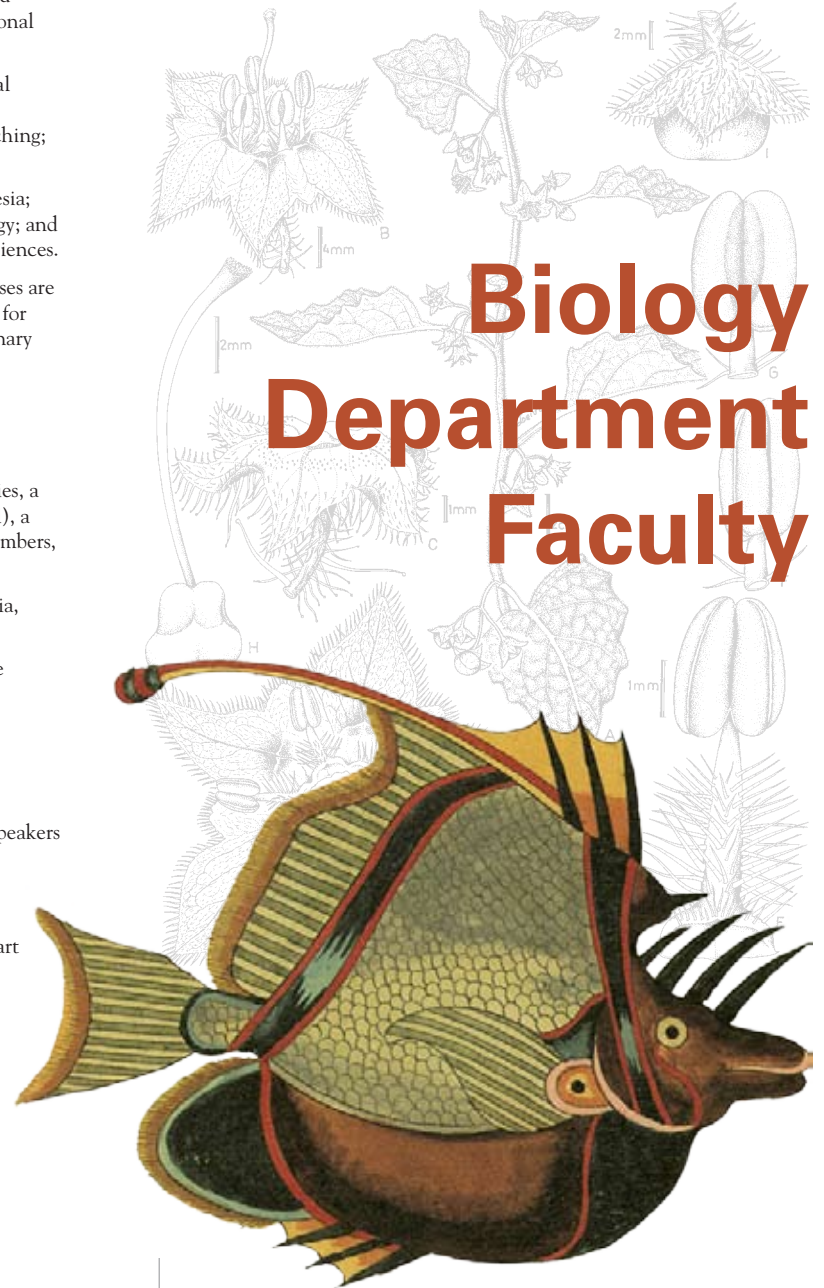


Through the academic and extracurricular opportunities that the department offers, students are prepared to understand and participate in a wide variety of biological specializations, and to use laboratory, library, and computer resources for biological research. Students in graduate programs expand their understanding of biological concepts, field and laboratory techniques, and their familiarity with recent developments in the area in which they specialize.

- Undergraduate research opportunities with faculty engaged in active research in the areas of neurobiology; medical anatomy and physiology; plant physiology; terrestrial, wetland, and freshwater and estuarine ecology; physiological ecology; microbial ecology; animal behavior; invertebrate biology; marine biology; systematics and evolution; herpetology; ornithology; and computational biology.
- Undergraduate Programs in general biology; ecology, biodiversity, and evolution; secondary biology teaching; and environmental science.
- Graduate Programs in anesthesia; health sciences; general biology; and ecology and environmental sciences.
- Pre-Health: wide range of courses are available to help students prepare for acceptance into medical and veterinary schools.
- Secondary Biology teacher preparation programs.
- Integration of teaching and research with access to state of the art equipment and extensive research facilities including academic and research laboratories, a greenhouse, specimen collections (plant and animal), a Boston Whaler boat, an animal facility, growth chambers, and walk-in refrigerators and freezer.
- International courses in England/Ireland, Australia, Peru, and Panama.
- Internships with Connecticut State agencies, nature centers, zoos, and private industry.
- Wide variety of courses with field experiences.
- Outreach programs with local schools and science organizations.
- Seminar program that brings in many well-known speakers from off campus.
- Center for Education and Research at Outer Island (CEROI), a cooperative program between the Connecticut State University System and the Stewart B. McKinney National Wildlife Refuge.



Biology Departmental Office
Room 332 Copernicus Hall
860-832-2645



Biology Department Faculty



Jeremiah N. Jarrett, Ph.D.
332 Copernicus
860-832-2648
jarrettj@ccsu.edu

Ecology of marine invertebrates including larval biology, population biology, and inducible defenses.

Department Chair



Douglas R. Carter, Ph.D.
343 Copernicus
860-832-2647
carterd@ccsu.edu

Plant physiology, particularly photosynthesis and chloroplast genomes.



Tiffany M. Doan, Ph.D.
342 Copernicus
860-832-2676
DoanTiM@ccsu.edu

The evolution and ecology of tropical organisms, especially reptiles and amphibians.



Sylvia L. Halkin, Ph.D.
336 Copernicus
860-832-2651
halkins@ccsu.edu

Animal behavior, avian biology, food-caching behavior of squirrels.



Mark Jackson, Ph.D.
347 Copernicus
860-832-2650
jacksonmae@ccsu.edu

Mammalian neurophysiology, stress physiology, electrophysiology, computational neuroscience.



Joshua King, Ph.D.
353 Copernicus
860-832-1651
kingjor@mail.ccsu.edu

Insect ecology, particularly social insects.



Jacob Krans, Ph.D.
342 Copernicus
860-832-2678
kransjal@ccsu.edu

Physiology and neurobiology of nerve-muscle communication



Thomas Mione, Ph.D.
338 Copernicus
860-832-2656
mionet@ccsu.edu

Plant systematics, plant reproductive biology, plant morphology.



Barbara J. Nicholson, Ph.D.
340 Copernicus
860-832-2706
nicholsonb@ccsu.edu

Ecology of terrestrial and wetland ecosystems, paleohistory of wetlands, and climate change.



Peter Osei, Ph.D.
339 Copernicus
860-832-2657
oseip@ccsu.edu

Lipid nutrition.



Clayton A. Penniman, Ph.D.
341 Copernicus
860-832-2658
penniman@ccsu.edu

Freshwater and estuarine water quality and seaweed ecology.



Ruth E. Rollin, Ph.D.
349 Copernicus
860-832-2659
rollin@ccsu.edu

Physiology, intestinal function.



David Spector, Ph.D.
348 Copernicus
860-832-2652
spectord@ccsu.edu

Birds; animal behavior; environmental education; cultural impacts of science.